

Data Sheet

Type Number 4028
Designation IEC 4 SR 44
System Silver oxide / Zinc /
 KOH - Electrolyte

Nominal Voltage 6,2 V
Typical Capacity C 145 mAh
 Load 20 kOhm, at 20°C down to 3.6 V

Weight (approx.) 11,1 g
Volume 3,3 ccm
Coding..... Manufacturing Quarter/Year by
 Letter Code

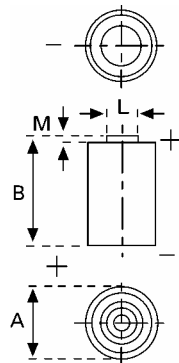
Temperature Ranges min max.
 Storage -10°C 65 °C
 Discharge -10°C 65°C

Dimensions min max.
 Diameter 12 13
 Height (A/B) 23,9 25,2

Segment Photo / High Drain

Main Applications Photo
 Electronic

Typical Capacities (at 20°C)



Discharge Type	Load	End Voltage:	3.6 V
Continuous 24h/d,7d/w Current [μ A]:	20000 Ω 310	Time: Capacity [mAh]: Energy [MWh]:	495 h 145 855